

Innis Arden Rambler

18532 Springdale Ct NW

Offered At: \$469,950



- 2 bedrooms
- 1.5 bathroom
- 1,475sq ft
- 27,979 sq ft lot
- Built in 1952
- MLS # 55312

Bob Melvey
206.650.7880

bmelvey@windermere.com
Windermere Real Estate/NW Inc.
206.789.770

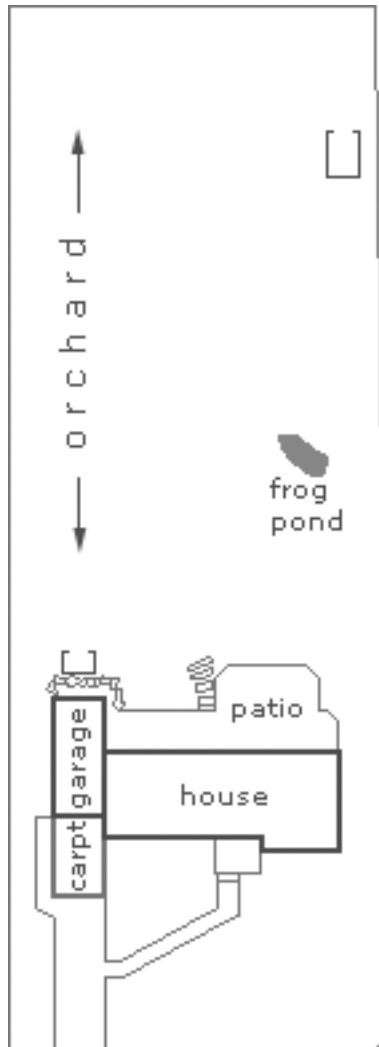
Mid-century modern rambler on 27,979 sq ft lot just 2 blocks to Innis Arden tennis courts & pool. Living room has oak floors, wood burning corner fireplace & entrance to sun-room overlooking back yard patio. Tastefully redone kitchen is open to dining area & has peaceful view from sink to help make doing the dishes more enjoyable. Very deep, finished garage w/plenty of room for a vehicle & hobby center. The back-forty" is lush expanse of law, w/fruit trees, raised veggie garden & frog pond.

Floor Plan Photo Tour at
www.BobMelvey.com


Windermere
REAL ESTATE

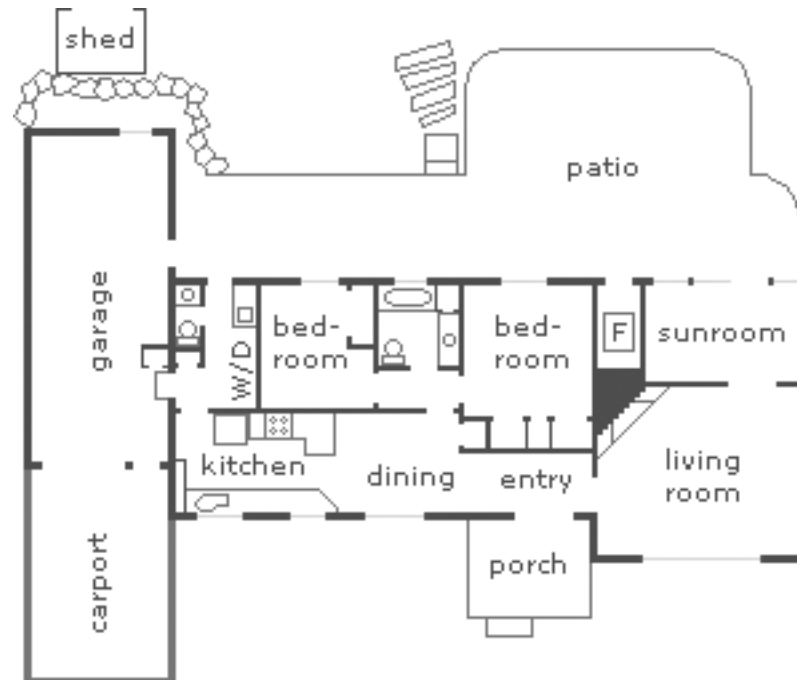
This information is provided as a courtesy only and doesn't create an agency relationship with potential buyers. It is also not a warranty and should be independently investigated by the buyer.

18532 Springdale Court NW



Springdale Court NW

Do you want a master bedroom? Move the washer/dryer to the garage and combine the half bath/utility room with the bedroom!



Bob Melvey
206.650.7880


Windermere
REAL ESTATE

Plot plan and floor plan may not be to scale and boundary lines may not be accurate. Buyer should independently verify to their own satisfaction.